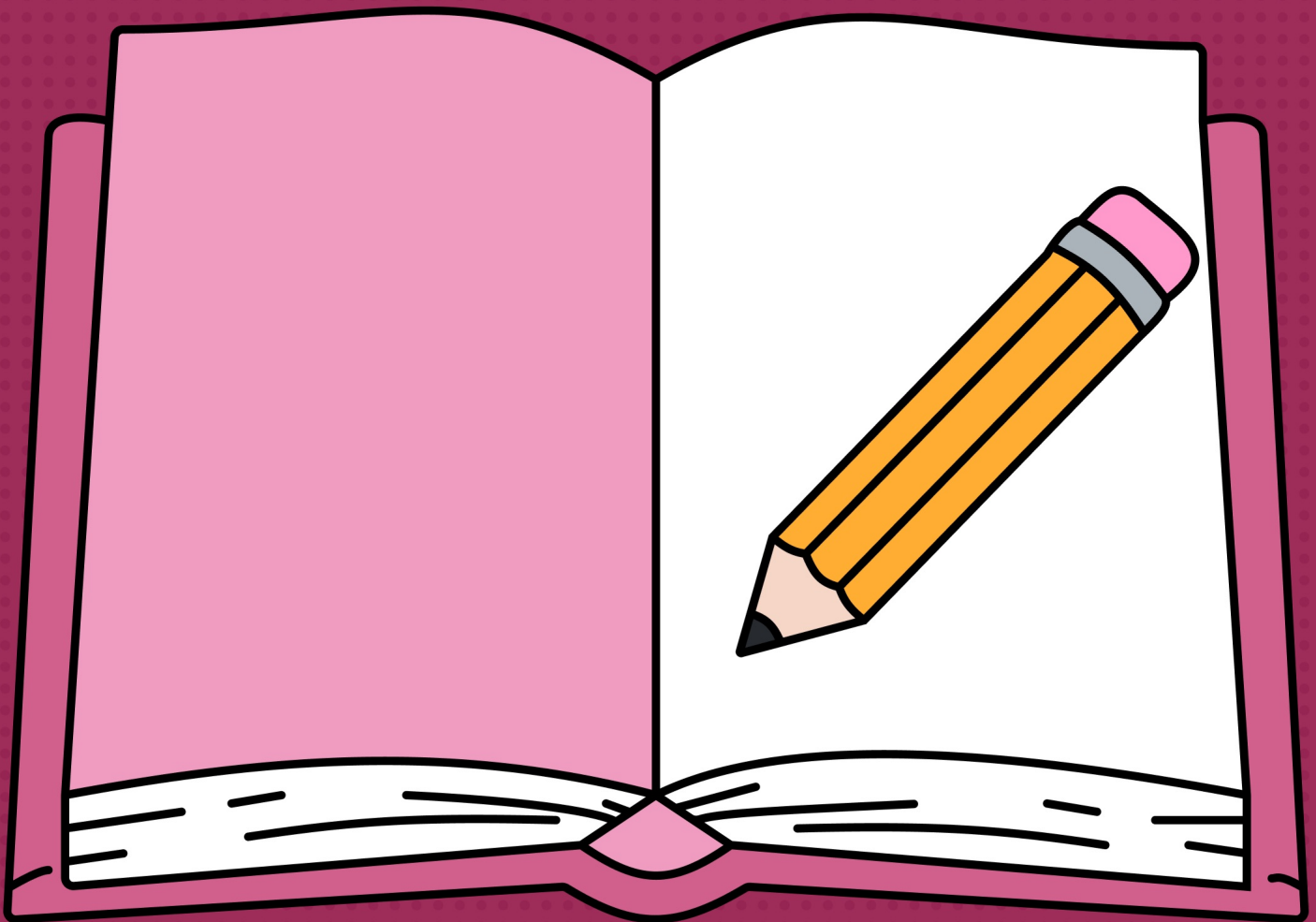


# Bimbo Oni Studio Student Handbook

Guidelines, Policies & Creative Standards



# WELCOME TO BIMBO ONI STUDIO

Welcome to Bimbo Oni Studio. This Student Handbook outlines the values, expectations, policies, and learning standards that guide every course, program, and interaction within the studio. It is designed to create a respectful, structured, and creative learning environment where students can grow confidently, ethically, and professionally.

Inside this handbook, you will find important information about studio conduct, content usage, intellectual property, community guidelines, learning expectations, and the responsibilities shared by both students and the studio. These guidelines exist not to restrict creativity, but to protect it, ensuring fairness, clarity, and mutual respect for everyone involved.

All enrolled students are expected to review and understand the contents of this handbook. Continued participation in any Bimbo Oni Studio program constitutes acknowledgment and acceptance of the policies and guidelines outlined in this document.

## Learning Approach & Student Responsibility

Learning within this program is active and self-driven. While live instruction, guidance, and feedback are provided, students are expected to:

- Review class recordings if live sessions are missed
- Complete assignments within the given timelines
- Practice independently outside of live sessions
- Apply feedback thoughtfully to future work

Skill development varies by individual. Completion of this program does not guarantee mastery, employment, or commercial success.

## Expected Outcomes (Program Completion)

By the end of the program, students are expected to have:

- A body of completed illustration work developed during the course
- Experience working through a comprehensive brand identity and illustration system.
- Improved technical confidence managing a dual-software workflow (Figma and Adobe Illustrator).

Certificates, portfolio readiness, and overall outcomes are determined based on participation, effort, and adherence to course requirements, as outlined in this handbook.

# STUDENT HANDBOOK

## About Bimbo Oni Studio

Bimbo Oni Studio was established in 2025 as a creative education and design studio focused on digital illustration, brand identity design, and modern creative workflows. The studio is built on the belief that creativity does not require traditional skills to begin, it can be learned, practiced, structured, and strengthened through the right tools, guidance, and mindset.

Bimbo Oni Studio provides:

- Structured digital illustration education
- Beginner-friendly creative learning experiences
- Practical, dual-software workflows using Figma, Adobe Illustrator, and AI.
- A calm, supportive learning environment focused on confidence and growth

Our goal is to help students unlock their creative potential, build confidence, and produce real, usable creative work.

## Founder

Abimbola Ashonibare is the founder of Bimbo Oni Studio. She is a Product Designer and Digital Illustrator with experience designing digital products and creating illustration work for modern brands and platforms. Her work blends structured design thinking with expressive illustration. Through Bimbo Oni Studio, Abimbola teaches students how to approach creativity with clarity, structure, and confidence, especially those who believe they “cannot draw” or are new to illustration.

To ensure a premium, comprehensive learning experience, Bimbo Oni Studio also routinely partners with industry-leading guest designers and strategists to deliver specialized curriculum modules.

Certificates, portfolio readiness, and overall outcomes are determined based on participation, effort, and adherence to course requirements, as outlined in this handbook.

## Scope of Learning & No Guaranteed Outcomes

Bimbo Oni Studio courses are designed to teach specific creative skills as outlined in each course curriculum.

While the studio is committed to delivering high-quality education and support:

- There is no guarantee of specific results, including employment, income, career advancement, or creative success.

# STUDENT HANDBOOK

## Scope of Learning & No Guaranteed Outcomes

- Each student's outcome depends on personal effort, practice, participation, and application of the skills taught.

Enrollment in a course does not create an expectation of professional certification, job placement, or financial gain.

## Course Structure & Delivery

Courses at Bimbo Oni Studio are delivered primarily through live online sessions. Pre-recorded courses will be available in the nearest future as well.

Course Format:

- Live classes (typically three sessions per week)
- Recordings of live classes provided after each session
- Assignments, exercises, and projects
- Community discussions and support spaces

Attendance:

- Live attendance is encouraged but not mandatory
- Students who miss live sessions are responsible for watching recordings
- Recordings are provided for learning purposes only

Bimbo Oni Studio reserves the right to modify class schedules, session formats, or delivery methods when necessary.

## Student Responsibilities & Participation

Students are expected to:

Course Format:

- Engage with course materials responsibly
- Complete assignments to the best of their ability

# STUDENT HANDBOOK

## Student Responsibilities & Participation

- Manage their own time and learning pace
- Communicate respectfully with instructors and peers
- Take responsibility for their learning progress

Lack of participation may affect eligibility for certificates or recognition.

## Student Code of Conduct

Bimbo Oni Studio maintains a respect-first learning environment.

Expected Behavior, students must:

- Treat instructors, staff, and fellow students with respect
- Communicate politely and constructively
- Respect diverse backgrounds, opinions, and experiences
- Follow instructions during live sessions and in community spaces

Prohibited Behavior:

- Harassment, bullying, or discrimination of any kind
- Threats, intimidation, or violent language
- Disruptive behavior during live classes or community interactions
- Sharing hateful, explicit, or inappropriate content
- Academic dishonesty or misrepresentation of work

Bimbo Oni Studio operates a zero-tolerance policy for harassment, violence, or abuse.

## Assignments & Academic Integrity

Students must submit original work.

- Inspiration and references are allowed, but copying someone else's work without disclosure is not permitted

# STUDENT HANDBOOK

## Assignments & Academic Integrity

- AI tools may be used where allowed, but students must follow course guidelines
- Misrepresentation of work as original when it is not is prohibited

Violations may result in:

- Loss of certification eligibility
- Removal from the course
- Permanent ban from future programs

## Certificates

Bimbo Oni Studio may offer certificates at its discretion.

Certificate of Participation

- Awarded to students who complete required coursework
- Requires submission of assignments and projects

Certificate of Excellence

- Awarded to students who demonstrate exceptional effort, growth, and quality of work
- Determined solely by Bimbo Oni Studio

Certificates are not guaranteed, not transferable, and may not be altered or misused.

## Intellectual Property & Content Ownership

Studio Content:

All course materials, including:

- Videos
- Slides
- Exercises

# STUDENT HANDBOOK

## Intellectual Property & Content Ownership

- Templates
- Frameworks
- Written content

are the intellectual property of Bimbo Oni Studio.

Students may not:

- Resell, redistribute, or share course materials
- Record live sessions for redistribution
- Use course content for commercial teaching or training

Student Work:

- Students retain ownership of their original work
- By enrolling, students grant Bimbo Oni Studio permission to:
  1. Share, repost, or showcase student work for promotional or educational purposes
  2. Credit the student where appropriate

## Brand Name & Logo Usage

Students may not:

- Use the Bimbo Oni Studio name or logo to imply endorsement
- Represent themselves as instructors or affiliates
- Create derivative brands or courses using studio branding

Written permission is required for any official brand use.

## Community Spaces

Community spaces are extensions of the learning environment.

# STUDENT HANDBOOK

## Community Spaces

- All code of conduct rules apply
- Disruptive or harmful behavior may result in removal
- Bimbo Oni Studio reserves the right to moderate or restrict access

## Refund Policy

All payments are final.

- No refunds
- No replacements
- No transfers

Failure to attend live classes or complete assignments does not qualify for refunds.

## Disciplinary Actions & Removal

Bimbo Oni Studio reserves the right to:

- Issue warnings
- Suspend access
- Permanently remove students without refund

Decisions are final and made to protect the learning environment.

## Limitation of Liability

Bimbo Oni Studio provides educational content only.

The studio is not responsible for:

- Personal, professional, or financial decisions
- Outcomes resulting from skill application

# STUDENT HANDBOOK

## Limitation of Liability

- Technical issues beyond reasonable control

## Updates to This Handbook

This handbook may be updated at any time. Continued participation implies acceptance of updates.

## Acceptance of Terms

By continuing participation in any Bimbo Oni Studio course after receiving this Student Handbook, you acknowledge that you have read, understood, and agreed to abide by the policies, guidelines, and expectations outlined in this document.

This handbook applies to all enrolled students and governs participation throughout the duration of the course. Continued access to classes, recordings, community spaces, certificates, and related resources is conditional upon compliance with this handbook.

Bimbo Oni Studio reserves the right to enforce these policies at its discretion to maintain a safe, respectful, and productive learning environment.

We are excited to create with you.